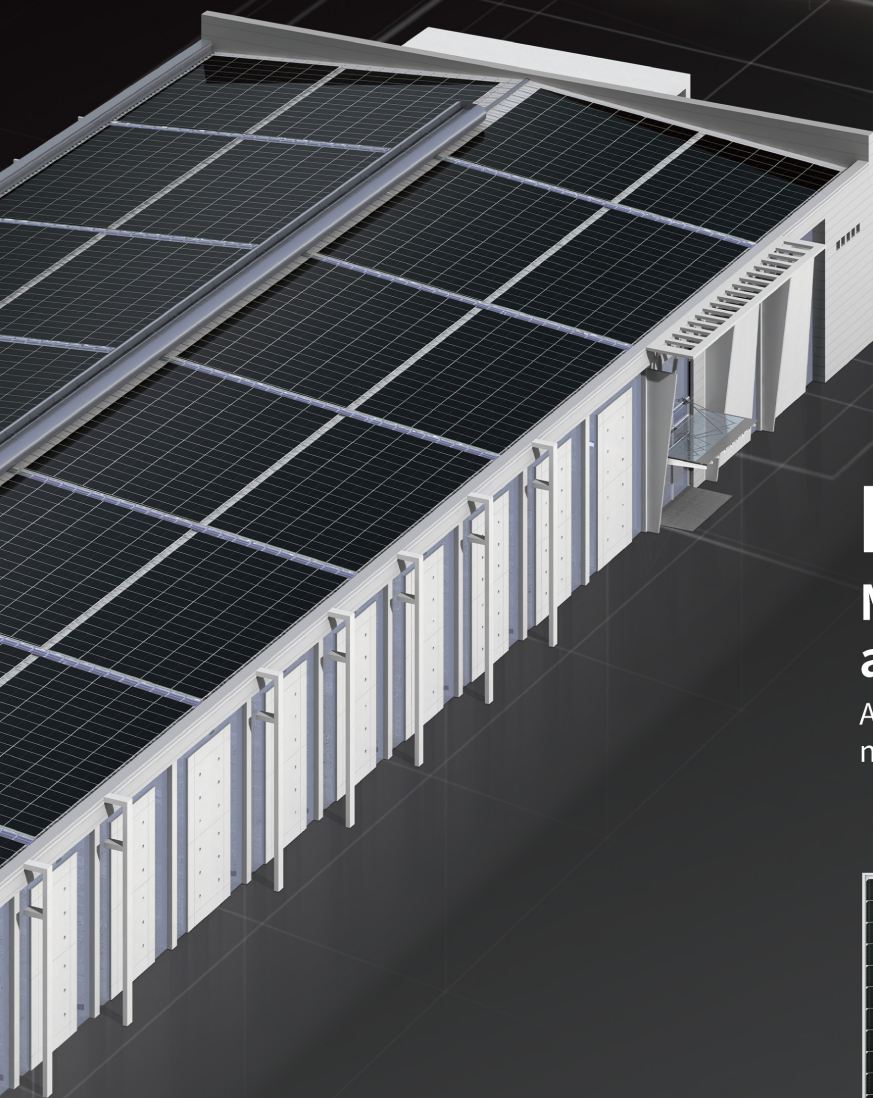


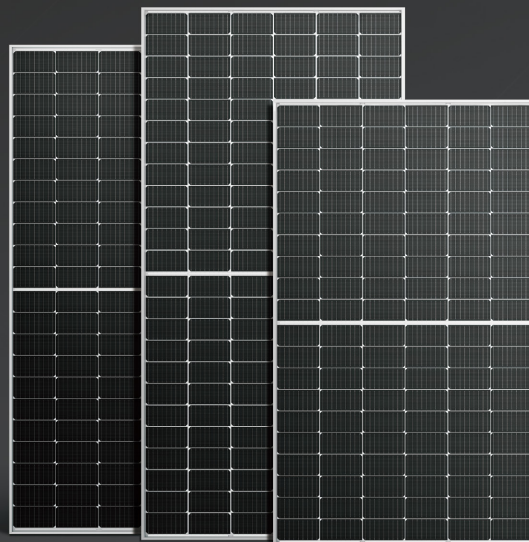
LONGi



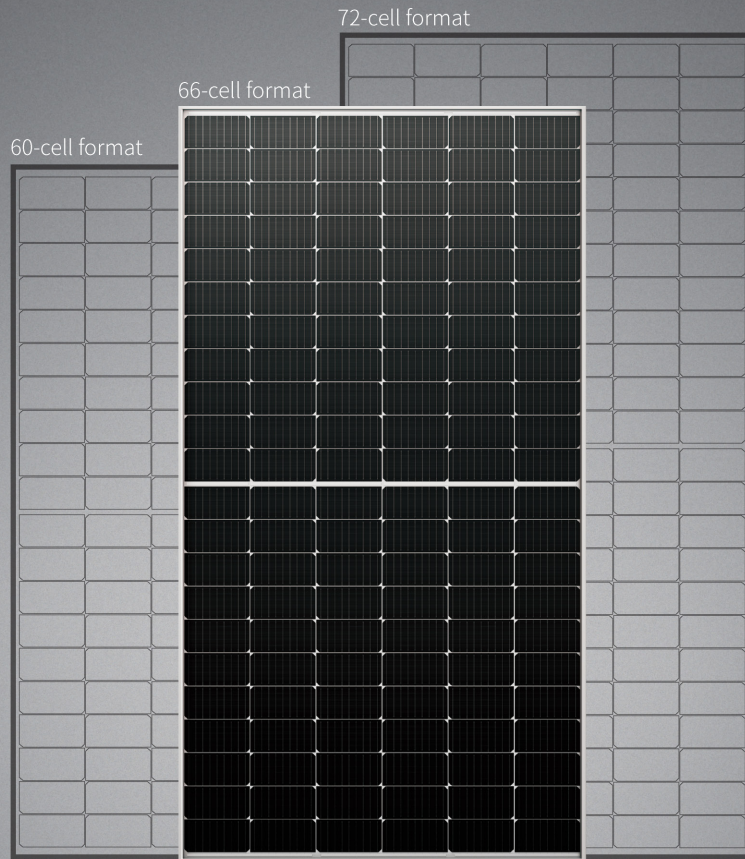
Hi-MO **4m**

Maximize Power Density
and Flexibility

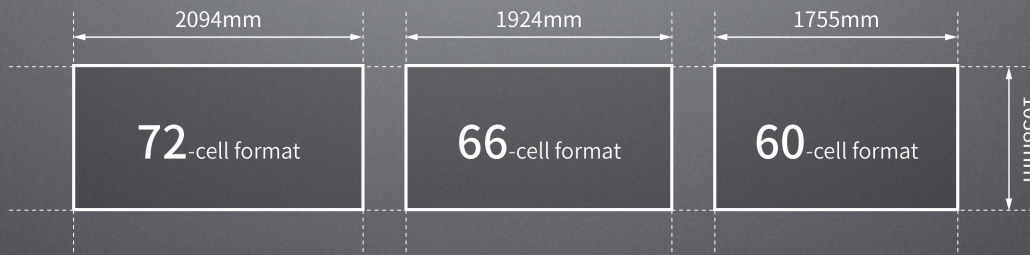
Available in 3 sizes to
maximize use of rooftop space



Hi-MO **4m**

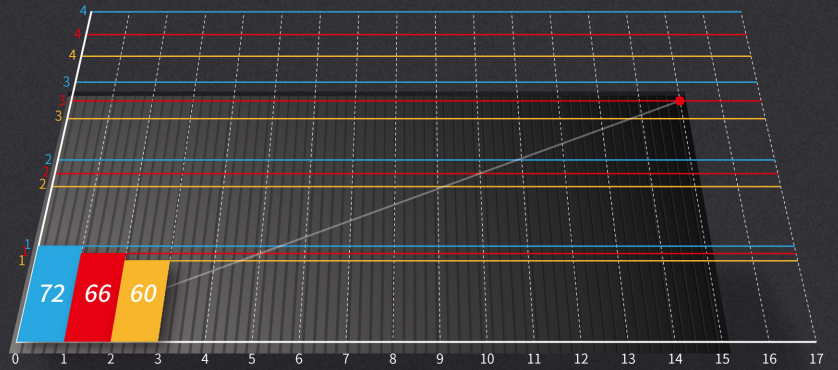


Standardised Width
Choice of Three Different Lengths



Maximize Installed Capacity

Flexibility to make full use of limited rooftop area



Flexible Electrics

- Operating current lower than 11A
- Applications in all DG projects
- Matches various inverters and optimizers
- Avoids high wiring loss

$$\frac{I_{sc}}{I_{mp}} < \frac{12A}{11A}$$



Flexible Installation



Pitched roof



Flat and angular roof



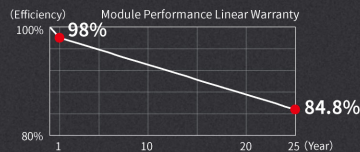
Flat roof with herringbone detail

Technical Advantages

- M6 Gallium-doped silicon wafer 9BB PERC cell
- Half-cut cell technology
- Max module efficiency >21%

Power Warranty

- First year degradation rate: $\leq 2\%$
- Linear degradation rate: $\leq 0.55\%$



Excellent Performance

Certifications of TÜV Rheinland and PV Magazine

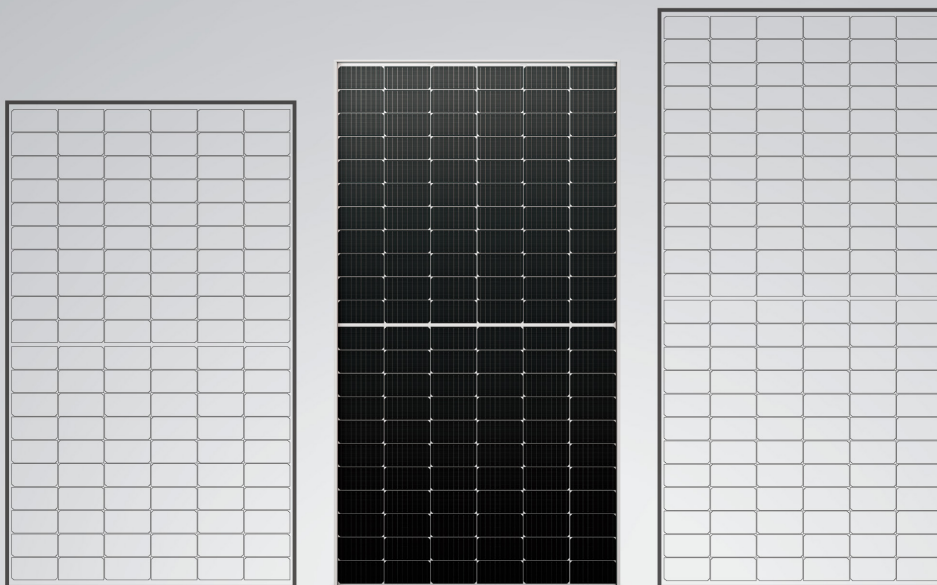


High Quality

- Scored "A+" in all 8 tests of reliability, performance, quality
- 2020 RETC High Achiever



Hi-MO **4m**



60-cell format

66-cell format

72-cell format

Power class	375~385W	410~420W	450~460W
Efficiency	20.6~21.1%	20.5~21.0%	20.7~21.2%
Dimension	1755×1038mm	1924×1038mm	2094×1038mm
Weight	19.5kg	22.0kg	23.5kg

LONGI

www.longi-solar.com